

# Sync Between Public (or Private) and Private Jira Instances

Last Modified on 01/15/2026 3:37 pm EST

Let's discuss a use case where you need to sync between Jira cloud and Jira on-premise instances, where the Jira on-premise instance is behind the firewall and is not accessible from the outside network.

## Why Sync Public and Private Jira Instances?

Often, customers for security reasons want to keep their instances behind a firewall, yet synchronize data with a public-facing Jira cloud instance. Such a setup allows the users working in Jira on-premise to maintain privacy and compliance, while getting the benefits of an integration.

In such a manner, teams can maintain transparency with their external partners, customers, or suppliers, boosting trust without exposing internal workflows.

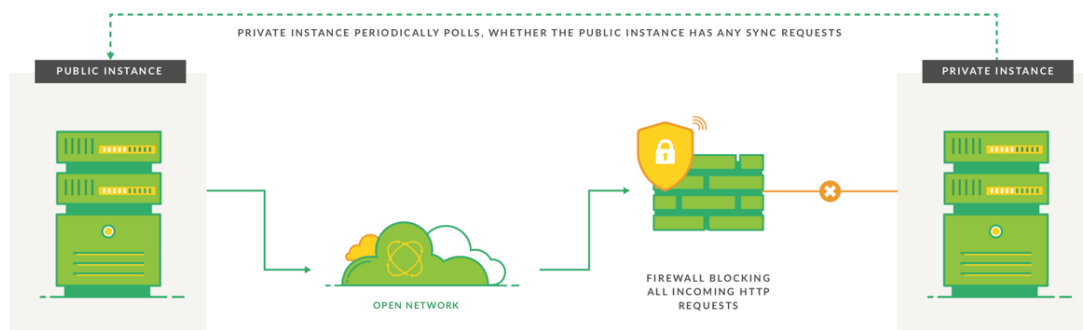
Such a synchronization helps enforce data governance, ensuring only approved information crosses between instances, meeting security and compliance needs.

## Using Exalate to Sync Between Private Jira On-premise to Jira Cloud Instances

The Exalate App is able to handle this type of communication between instances and synchronize issues either in a uni- or bi-directional manner.

In such cases, only the private instance can initiate the network traffic to the public one. With the help of the Exalate app, you can sync issues between instances even if one of them is not accessible from the public network.

How is the traffic different between public and private instances?



## Example

You have two Jira instances. One is a private instance (is not accessible from the outside network) and the other is a public instance.

Let's call the private instance ***Internal*** and the public instance ***External***. Only the ***Internal instance*** can initiate network traffic to the ***External instance***.

You want to exchange data between the InternalProject and ExternalProject that are present on the internal and external Jira instances respectively.

## Sync Public and Private Jira On-premise Instances

Another common use case is synchronization between 2 Jira on-premise instances, where one Instance is behind the firewall and is not accessible from the outside network. The Exalate is able to handle this situation by configuring a 'private' to 'public' connection. Only the private instance initiates the network traffic to the public one and requests if there are any changes queued.

## Sync Between Two Private Jira Instances

Using Exalate, it is also possible to sync between two private Jira instances.

For more information, please read [how the traffic is different between public and private instances](#).

## Example

You have two Jira instances. One instance is behind a firewall and you cannot access it from your side. Another instance is a public instance which can be accessed from the public network. Let's call the private instance ***Internal*** and the public instance ***External***. Only the ***Internal instance*** can initiate network traffic to the ***External instance***.

You want to exchange data between the *InternalProject* and *ExternalProject* that are present on the internal and external Jira instances respectively. Below you can see the configuration steps to set up such a kind of synchronization.

Below you can see the configuration steps to set up the synchronization.

## Configuration Steps

1. Set up a Connection from the External Instance.

- 1.1. Click '**I don't have a URL**'.

Exalate suggests available connection types based on the destination instance's version of Exalate.

- 1.2. Select the proper connection type as shown below

You can choose between Basic or Script configuration modes, since Visual configuration is only allowed in Public connections.


Initiate connection

Destination instance URL ⓘ


https://example.exalate.net

I don't have a URL


Choose the configuration type

Basic ⓘ

- Automatic configuration of basic fields
- Sync rules cannot be edited
- Only Issues can be synced
- Recommended for use cases of basic complexity

Visual ⓘ

- Low-code, visual interface
- Configure both sides of the connection using a single interface
- Recommended for use cases of basic to intermediate complexity

Script

- Groovy-based scripting
- Configure each side of the connection separately
- Recommended for use cases of basic to advanced complexity

Next

1.3. Complete other steps from the connection wizard.

2. Send an Invitation to the Destination Instance.
3. Make sure the Destination side has accepted the invitation.
4. Synchronize issues.

For more information, please read the [getting started guide](#).

## ON THIS PAGE

[Why Sync Public and Private Jira Instances?](#)

[Using Exalate to Sync Between Private Jira On-premise to Jira Cloud Instances](#)

[Example](#)

**Product**  
[Sync Public and Private Jira On-premise Instances](#)  
[About Us](#) ⓘ

[Sync Between Two Private Jira Instances](#)

[Glossary](#) ⓘ  
[Example](#)  
[API Reference](#) ⓘ  
[Configuration Steps](#)  
[Security](#) ⓘ

[Pricing and Licensing](#) ⓘ

### Resources

[Subscribe for a weekly Exalate hack](#) ⓘ

[Academy](#) ⓘ

[Blog](#) ⓘ

[YouTube Channel](#) ⓘ

[Ebooks](#) ⓘ

### Still need help?

[Join our Community](#) ⓘ

[Visit our Service Desk](#) ⓘ

[Find a Partner](#) ⓘ